

Cordis[®]
PART OF THE Johnson & Johnson FAMILY OF COMPANIES

Cordis **AQUATRACK**[™]

Hydrophilic Nitinol Guidewire

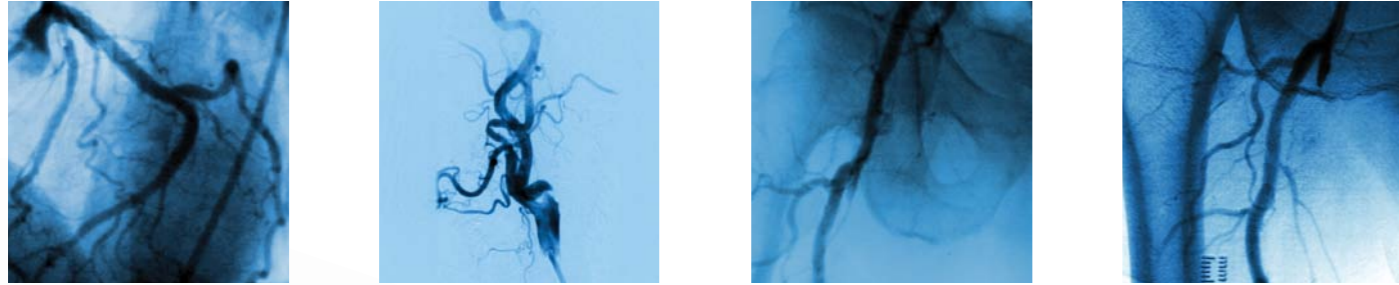
Instant response
through the turns



Instant response through the turns

Cordis **AQUATRACK™**
Hydrophilic Nitinol Guidewire

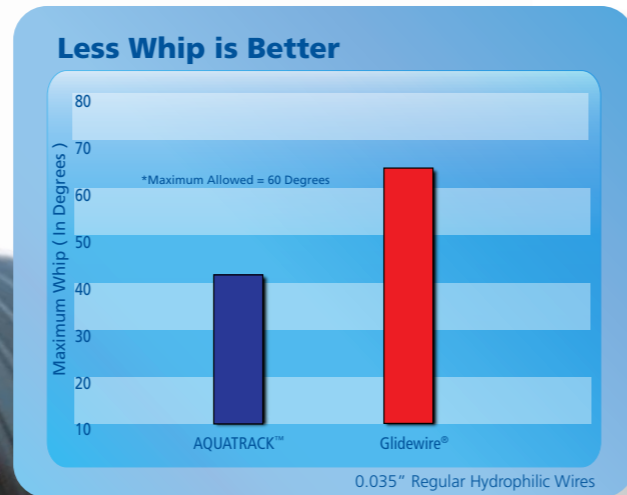
Easing access, however tortuous the anatomy



True one to one torque response*

Compared with the Terumo Glidewire®, AQUATRACK™ provides:

- More precise control for vessel selection and lesion crossability
- Immediate response, with significantly less whip
- Minimal risk of kinking, perforation or dissection



Lasting lubricity*

The AQUATRACK™ jacket and hydrophilic coating:

- Minimise the push force required for wire deployment
- Lead to better lubricity retention for longer cases with less wiping of the wire
- Allow easier reinsertion after wiping due to controlled swelling of the coating

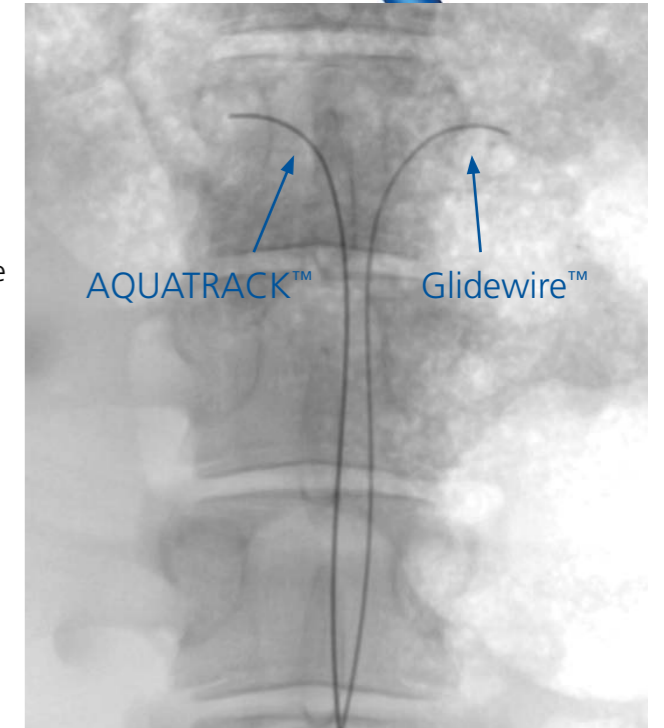
The Photolink® hydrophilic coating process:

- Creates a strong bond between the lubricious coating and the wire surface
- Reduces the possibility of embolisation from detached jacket debris by chemical bonding of the jacket to the wire

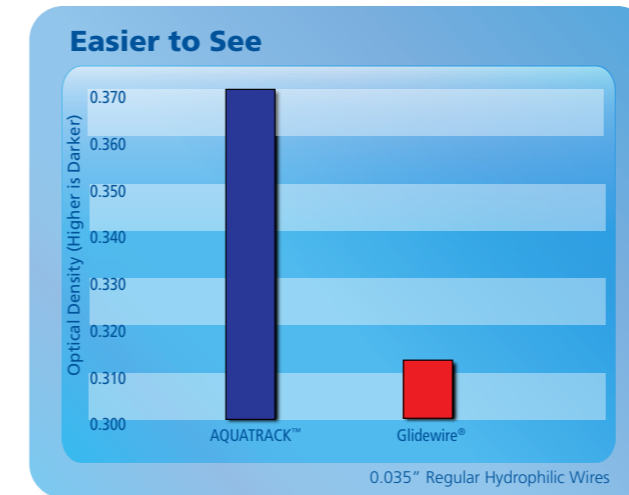
Superior radiopacity*

Compared with the Terumo Glidewire®, AQUATRACK™:

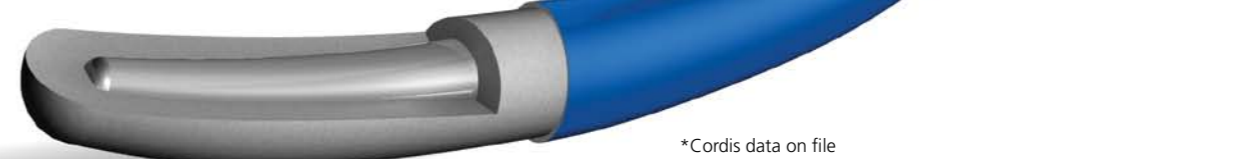
- Shows up significantly darker under fluoroscopy due to increased radiopaque material in polymer jacket
- May allow faster and more accurate procedures with fewer complications due to increased visibility



Cordis data on file



**Hydrophilic lubricity.
Bare wire torque.**



*Cordis data on file

Cordis AQUATRACK™

Hydrophilic Nitinol Guidewire


Ordering Information

Cordis AQUATRACK™ Hydrophilic Guidewire				
Product code	Length	Stiffness	Taper	Tip
C3515-RSS	150cm	Regular	Short	Straight
C3515-RSA	150cm	Regular	Short	Angled*
C3515-SSA	150cm	Stiff	Short	Angled*
C3518-RSS	180cm	Regular	Short	Straight
C3518-RSA	180cm	Regular	Short	Angled*
C3518-SSA	180cm	Stiff	Short	Angled*
C3526-SSS	260cm	Stiff	Short	Straight
C3526-SSA	260cm	Stiff	Short	Angled*
C3526-RSA	260cm	Regular	Short	Angled*

0.035" Packed 5 pcs per box

*Angled = 60 degree angle

For outstanding results, use the AQUATRACK™ Hydrophilic Nitinol Guidewire in combination with a TEMPO® AQUA® diagnostic catheter. With its braided shaft and durable hydrophilic coating, it is the perfect partner in procedures like subintimal angioplasty. Please contact your local Cordis representative for more information.



Torque device
packaged with every
AQUATRACK™
guidewire

Selected Cordis TEMPO® AQUA® Diagnostic Catheters

Shape	Length	4F	5F	
Berenstein (BERN)	100cm	452-413H0	452-513H0	
Cobra Child I (C1)	65cm	452-442V0	452-542V0	
Cobra Small Adult (C2)	65cm	452-443V0	452-543V0	
Cobra Small Adult (C2)	80cm	452-443S0		
Headhunter I (H1)	100cm	452-435H0	452-535H0	
Multipurpose Adult I (MPA1)	100cm	452-407H0	452-507H0	
Sidewinder Simmons Technique I (SIM1)	100cm	452-430H0	452-530H0	
Sidewinder Simmons Technique II (SIM2)	100cm	452-431H0	452-531H0	
Vertebral (VERT)	100cm	452-414H0	452-514H0	
Straight (STR)	125cm	SRD 6682		
Renal Double Curve Adult	80cm	452-447S0	452-547S0	
Shepherd Hook II	65cm	452-450V0	452-550V0	
Uni Select	80cm	452-418S0		
Bentson-Hanafee-Wilson I (JB1)	100cm	452-423H0	452-523H0	

0.038" Guidewire acceptance. Packed 1 per box.

Important Information:

Prior to use, refer to the "Instructions for use" supplied with these devices for indications, contraindications, side effects, suggested procedure, warnings and precautions. As part of the Cordis policy of continuous product development we reserve the right to change product specifications without prior notification. Not for distribution in the USA. The third-party trademarks are trademarks of their respective owners.